



JTRACK

A platform for collecting digital biomarkers



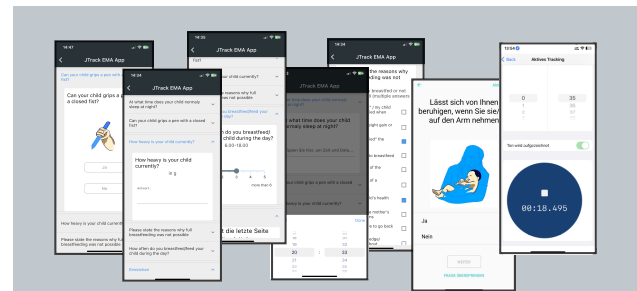
Smartphones enable high-frequency, high-quality health data collection, complementing sparse in-clinical assessments. The JTrack Platform streamlines study management, and data collection in a single platform via the JTrack Social and JTrack EMA apps, along with the JDash monitoring dashboard.

Easy administration: Create, share and analyze studies in a few clicks

Passive monitoring: Via smartphone sensors such as gyroscope or GPS

Active monitoring: Questionnaires or ecological momentary assessments

Available on Desktop, iOS and Android.



From idea to acquisition:



Create studies and questionnaires



Generate & send QR code to participants



Participant registers, completes tasks, transmits acquired data

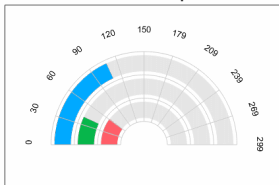


Manage, control and download via JDash

iOS:



Number of data points



- Data per day usage
- Data per day location
- Data per day activity

Android:



Docs:



JDash for administration and analysis

Extensive functionality and search

Studies Survey Analytics

[Add Study](#)

subjects in study | subjects completed study | subjects left study | subjects removed

Name	Enrolled subjects	Description	Sensors
ABCD_J		This study serves to illustrate the JTrack Suite at the ABCD-J meeting on September 22 2023	ac at au ba gs gy lo ms ro In ema al

Entwicklungsstudie_HHU

Information: Duration 730 days, Sensors EMA, Status active

Check Analyze Refresh

Subject ID	App	Sensor Information	Status
Entwicklungsstudie_HHU_00002	ema		In study
Entwicklungsstudie_HHU_00003	ema		In study
Entwicklungsstudie_HHU_00004			
Entwicklungsstudie_HHU_00004_1	ema		In study
Entwicklungsstudie_HHU_00004_3	ema		In study
Entwicklungsstudie_HHU_00004_2	ema		Left study
Entwicklungsstudie_HHU_00005			
Entwicklungsstudie_HHU_00005_1	ema		In study
Entwicklungsstudie_HHU_00006			
Entwicklungsstudie_HHU_00006_1	ema		In study
Entwicklungsstudie_HHU_00009_1	ema		Left study
Entwicklungsstudie_HHU_00007			

Download unused subject sheets

Remove subject

Remove Subject

Create Subjects

Click to view sensor details

- Subject completed the study
- Subject didn't send any sensor data in last two days
- Subject has left the study
- Subject is actively sending data